

# Chalet mit Hornblick

holiday apartment in Kirchdorf in Tirol



Feriendorf 21 • A-6382 Kirchdorf in Tirol • [isabel.maier@kitzalm.de](mailto:isabel.maier@kitzalm.de) • +49 177 5528366



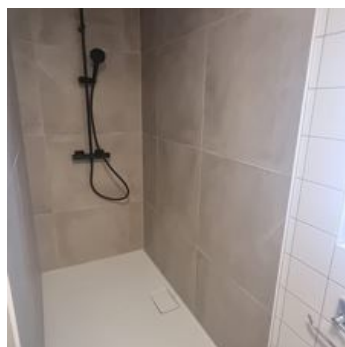
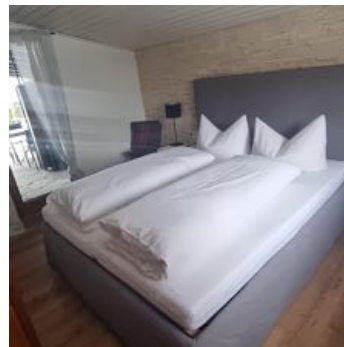
# Chalet mit Hornblick

## holiday apartment in Kirchdorf in Tirol

The small chalet is located in the holiday village of Litzenfelden with a view of the Kitzbüheler Horn. The house has a cozy atmosphere with wood-paneled walls and the accompanying alpine charm. The house has 1 bunk bed for 2 people and a double bed. The bedroom with the double bed also includes a washbasin with a mirror. The bathroom has everything you need: shower, sink, and toilet. There is also a washing machine. The living-dining room is very bright and friendly.

We have a Swedish stove to create a nice mountain feeling in winter.

The house is bathed in sunlight the whole morning, and you can wonderfully relax on the terrace. Even in winter, the sun warms the area sheltered from the wind. Depending on the position of the sun, it sets behind the mountain around 3 PM.



quiet location

## Rooms and Apartments

### Current Offers

#### Apartment, bath, toilet, 2 bed rooms

1-4 Personen · 20 Bedrooms · 70 m<sup>2</sup>

ab  
**€ 90,00**

per apartment on 26.09.2025

[TO THE OFFER](#)

## Chalet mit Hornblick

holiday apartment in Kirchdorf in Tirol

Feriendorf 21

A-6382 Kirchdorf in Tirol

Email: [isabel.maier@kitzalm.de](mailto:isabel.maier@kitzalm.de)

Phone: +49 177 5528366



## Isabel Maier

We love the mountains and the entire region. There are countless activities in every season. In winter, skiing in 5 different ski areas. All quickly accessible. Ski area Saalbach Hinterklemm with access to Fieberbrunn (20 min), St. Johann ski area in 10 min, the ski area Ellmau/Söll/Going reachable in 10 min, and Kitzbühel in 20 min.

In addition to skiing, there are cross-country ski trails. Right outside the door, it starts. In St. Johann, you can go ice skating or play tennis indoors. A great fun pool for all age groups. There are also various tennis halls. Hiking is always an option.

In summer, countless hikes and climbing tours invite you in the Wilder Kaiser. The bike path starts right at the front door along the Aache. There are bathing lakes and outdoor pools nearby. Tennis courts can be found in Kirchdorf, as well as a small outdoor pool.

Everything is possible. Indoor and outdoor.