

Ferienwohnungen Egg

farm, farmhouse in Fieberbrunn



100 %
15 Ratings



Bärfeld 3 · A-6391 Fieberbrunn · ferienwohnungen-egg@outlook.com · +43 664 9198248
Additional information at <https://www.fieberbrunn-bauernhof.com/de/>

Tourismusverband PillerseeTal
Dorfplatz 1
6391 Fieberbrunn
AUSTRIA

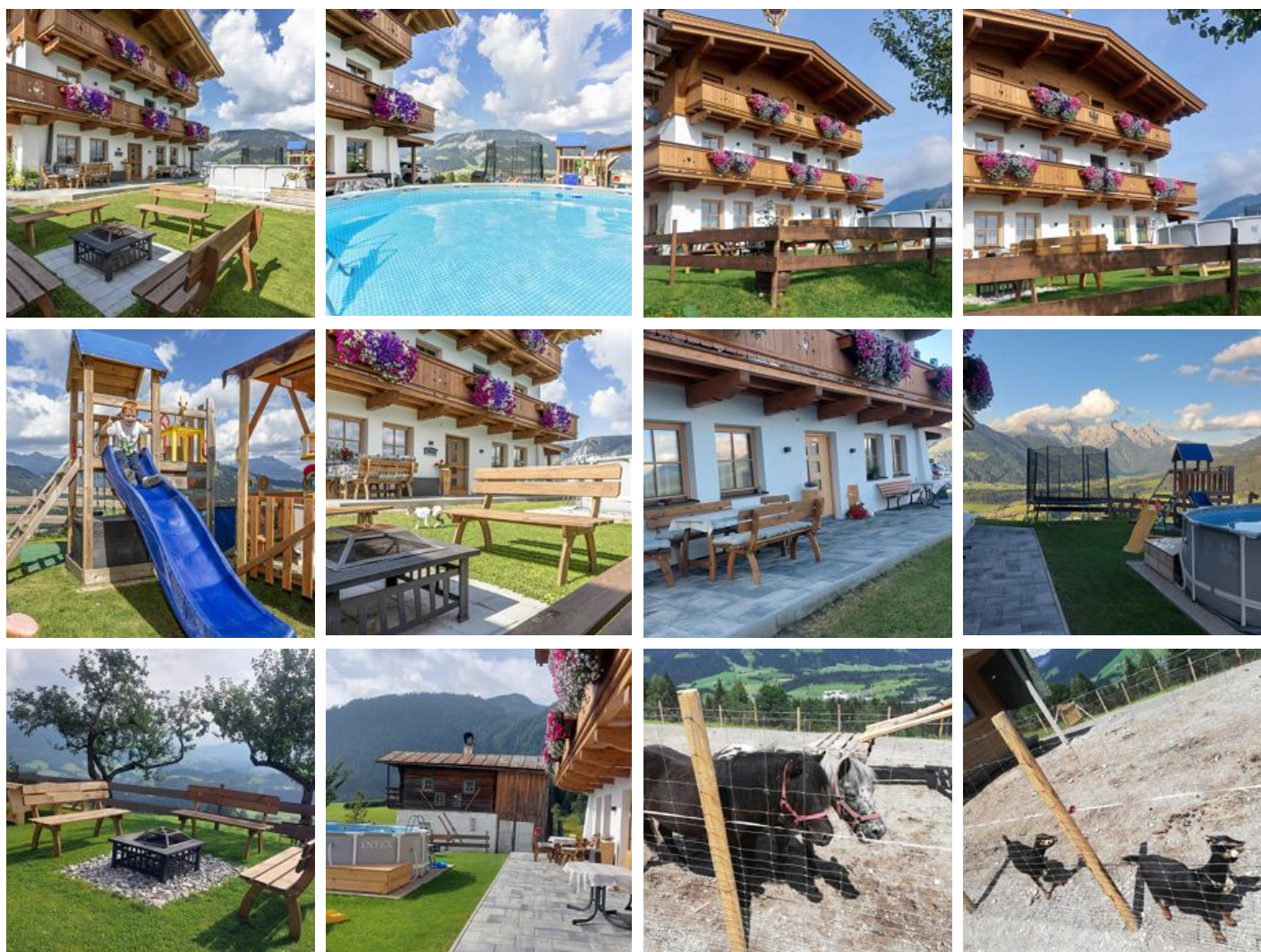
Tel. +43 5354 56304
Fax +43 5354 56304 750
info@pillerseetal.at
www.pillerseetal.at

UID-Nr. ATU53749804
Raiffeisenbank Kitzbühel - St. Johann eGen
BLZ: 36263 / BIC: RZTIAT22263
IBAN: AT38 3626 3000 0422 1834

Ferienwohnungen Egg

farm, farmhouse in Fieberbrunn

Our newly built farmhouse is situated in the middle of the Kitzbühel Alps, on approx. 1.000m above sea level and offers a breathtaking view over the PillerseeTal. In summer it is the ideal starting point for hikes, but you can also relax and enjoy the view in the appartement's own outdoor pool. In winter, the toboggan run runs directly past the house and the cross-country ski run is also just a few minutes away. A few minutes drive will take you to the Skircircus Saalbach Hinterglemm Leogang Fieberbrunn and the Buchensteinwand ski area, which is particularly suitable for families with children. On our farm there are milking cows, also cats, rabbits, a dog and a zoo with small animals. We also offer our youngest guests a large playground, a trampoline and a table tennis table to let off steam.



Tourismusverband PillerseeTal
Dorfplatz 1
6391 Fieberbrunn
AUSTRIA

Tel. +43 5354 56304
Fax +43 5354 56304 750
info@pillerseetal.at
www.pillerseetal.at

UID-Nr. ATU53749804
Raiffeisenbank Kitzbühel - St. Johann eGen
BLZ: 36263 / BIC: RZTIAT22263
IBAN: AT38 3626 3000 0422 1834

private setting · near the forest · quiet location · on the hiking path · mountain location · meadowlands · right at the cross-country ski trail · yoga

Rooms and Apartments

Current Offers

Apartment



1-6 Personen · 2 Bedrooms · 58 m²

The newly built apartment Spielberg for 4-6 persons has two bedrooms, a bathroom with WC and a kitchen-living room. The bedrooms offer a double bed and 2 single beds. The kitchen-living room is fully ...

ab
€ 42,75

per person on 26.09.2025

TO THE OFFER

Apartment



1-4 Personen · 1 Bedrooms · 49 m²

The newly built apartment Wildseeloder for 2-4 persons has a bedroom with double bed, a bathroom with WC and a spacious kitchen-living room. The kitchen-living room is fully equipped with a coffee mac...

ab
€ 49,00

per person on 26.09.2025

TO THE OFFER

Conditions

In our apartments are bed linen, towels, tea towels, parking, WLAN, water, electricity and heating included. Final cleaning, MwSt and tourist tax are not included!

Tourismusverband PillerseeTal
Dorfplatz 1
6391 Fieberbrunn
AUSTRIA

Tel. +43 5354 56304
Fax +43 5354 56304 750
info@pillerseetal.at
www.pillerseetal.at

UID-Nr. ATU53749804
Raiffeisenbank Kitzbühel - St. Johann eGen
BLZ: 36263 / BIC: RZTIAT22263
IBAN: AT38 3626 3000 0422 1834

Ferienwohnungen Egg

farm, farmhouse in Fieberbrunn

Bärfeld 3

A-6391 Fieberbrunn

Email: ferienwohnungen-egg@outlook.com

Phone: +43 664 9198248

<https://www.fieberbrunn-bauernhof.com/de/>



Andreas Hofer

We - Andreas, Christina, David, and Elena - are a young family that fulfilled their dream of a home in 2019. For Andreas, who works as a breeding officer at the Tyrolean State Control Association, and Christina, who is a nurse, it has always been clear that they want to host and be surrounded by people. To all those who are not so familiar with country life, we would like to bring the topic and the work a little closer. We would be happy to show you around and explain everything we know. David was born in August 2017 and also enjoys showing you around the farm and telling you a bit about us. Elena, who was born in September 2021, will surely be out and about in the coming years.:)