

# Flicklhof

farm, farmhouse in Hopfgarten im Brixental



Grafenweg 49 · A-6361 Hopfgarten im Brixental · **[martina.sieberer@tsn.at](mailto:martina.sieberer@tsn.at)** · **+43 664 73820348**



Ferienregion Hohe Salve  
6300 Wörgl, Innsbrucker Str. 1  
AUSTRIA

Telefon: +43 57507 7000  
Fax: +43 57507 7020  
[info@hohe-salve.com](mailto:info@hohe-salve.com)  
[www.hohe-salve.com](http://www.hohe-salve.com)

UID: ATU44549501  
Gerichtsstand: Bezirksgericht Kufstein  
Raiffeisenbank Wörgl  
IBAN: AT64 3635 8000 0068 9315 / BIC: RZTIAT22358



# Flicklhof

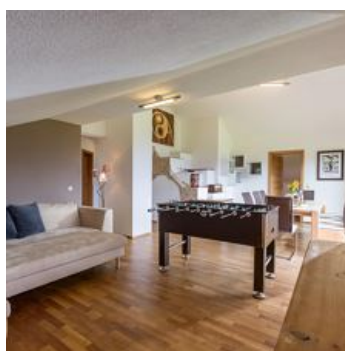
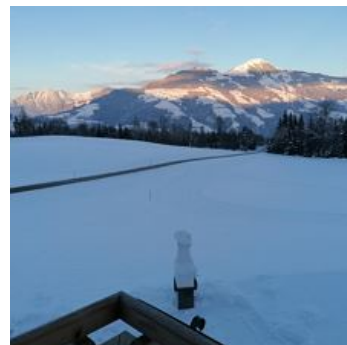
## farm, farmhouse in Hopfgarten im Brixental

Welcome to the Flicklhof, a working farm in a wonderful secluded location in the heart of the Kitzbühel Alps. Enjoy the magnificent view of the Hohe Salve and the Wilder Kaiser. The spacious, well-equipped eat-in kitchen, the large, cosy living room and the sunny garden terrace with adjoining meadow offer holidaymakers of all ages plenty of space for rest, fun and relaxation all year round. Hiking and cycling trails as well as the cross-country ski trail lead right past the farm.

The Wilder Kaiser - Brixental ski area and the Wildschönau ski area are just 10 minutes away by car. The on-call taxi will be happy to pick you up the day before if you book in advance and take you to the Wilder Kaiser - Brixental ski area free of charge.

The large terrace with barbecue and the playground invite you to linger in the open air. For children and playful adults there are various play equipment (toboggans, skibobs, pedal tractors, bobby cars, badminton, table tennis, balls, table football, board...







## Rooms and Apartments

### Current Offers

#### Holiday flat with 5 bedrooms for 10 people



1-10 Personen · 5 Bedrooms · 180 m<sup>2</sup>

The holiday flat for up to 10 people is spread over 2 floors. On the 1st floor there is an open-plan kitchen, a living and dining room, 2 bedrooms (each with a double bed, a bunk bed and a cot), a ba...

ab  
**€ 260,00**

per apartment on 26.09.2025

**TO THE OFFER**

#### Holiday flat with 2 bedrooms for 6 people



1-6 Personen · 5 Bedrooms · 180 m<sup>2</sup>

The holiday flat for up to 10 people is spread over 2 floors. On the 1st floor there is an open-plan kitchen, a living and dining room, 2 bedrooms (each with a double bed, a bunk bed and a cot), a ba...

ab  
**€ 180,00**

per apartment on 26.09.2025

**TO THE OFFER**

## Conditions

Pets are not welcome.

Charging your electric car is possible at the accommodation.

When booking the holiday flat with 2 bedrooms, the 2nd floor is closed.



## Flicklhof

farm, farmhouse in Hopfgarten im Brixental

Grafenweg 49

A-6361 Hopfgarten im Brixental

Email: [martina.sieberer@tsn.at](mailto:martina.sieberer@tsn.at)

Phone: +43 664 73820348