

# Bauernhof Brummer

farm, farmhouse in Hopfgarten im Brixental



Kelchsauer-Straße 82 · A-6361 Hopfgarten im Brixental · **ml@tlh-holzbau.at**

# Bauernhof Brummer

## farm, farmhouse in Hopfgarten im Brixental

The stand-alone farmhouse is situated midway between Hopfgarten and Kelchsau. Therefore, it is no problem at all to reach both the practice ski area Kelchsau and SkiWelt Wilder Kaiser Brixental, one of the largest and most modern ski areas worldwide - either by car or with the ski bus which stops right in front of the house. The Salvenland leisure park with its lake, pool and many more attractions is also in close vicinity to the farmhouse.



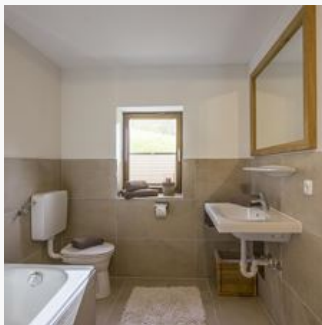
quiet location · outskirts of town · right at the ski-bus/ hiking-bus/ bus stop



## Rooms and Apartments

### Current Offers

#### Holiday home, shower and bath, toilet, 4 or more bed rooms



1-10 Personen · 5 Bedrooms

The farmhouse accommodates 10 persons. It offers 5 bedrooms and 2 bathrooms. The friendly, fully equipped kitchen invites to have joint cooking sessions. The heart of the house is the cosy sitting roo...

ab  
**€ 999,00**

per apartment on 26.09.2025

**TO THE OFFER**

## Conditions

Included: electricity, water, heating

Not included: final cleaning and local tax

Max. 2 pets per stay - price after consultation

Bookings are made directly through Belvilla!

## Bauernhof Brummer

farm, farmhouse in Hopfgarten im Brixental

Kelchsauer-Straße 82

A-6361 Hopfgarten im Brixental

Email: ml@tlh-holzbau.at