

# Apartment Rabl

holiday apartment in Kirchbichl



Luechstraße 1 · A-6322 Kirchbichl · [jonathanrabl51@gmail.com](mailto:jonathanrabl51@gmail.com) · **+43 650 9149953**

# Apartment Rabl

## holiday apartment in Kirchbichl

The house is situated on a sunny plot of approx. 900m<sup>2</sup>. There is a traffic hub in vicinity of the house. The nearest ski area is less than 5 minutes away. It is also only a few minutes' drive to the nearest town.

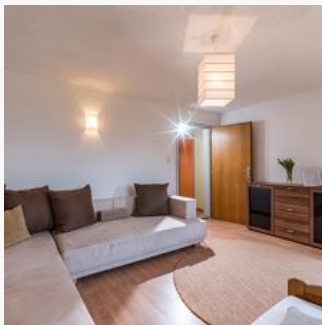


quiet location - right on the bike path

## Rooms and Apartments

### Current Offers

#### Apartment, bathtub, 3 bed rooms



1-5 Personen · 3 Bedrooms · 85 m<sup>2</sup>

The apartment lies on the first floor and, with approx. 85m<sup>2</sup>, it offers a lot of space for up to 5 persons. The bright flat comprises three bedrooms and provides private access to the large garden. Fr...

ab  
**€ 199,00**

per apartment on 26.09.2025

**TO THE OFFER**

## Conditions

Included: electricity, water, heating

Exclusive: final cleaning, local tax

## Apartment Rabl

holiday apartment in Kirchbichl

Luechstraße 1

A-6322 Kirchbichl

Email: jonathanrabl51@gmail.com

Phone: +43 650 9149953