

## Unting

farm, farmhouse in Westendorf

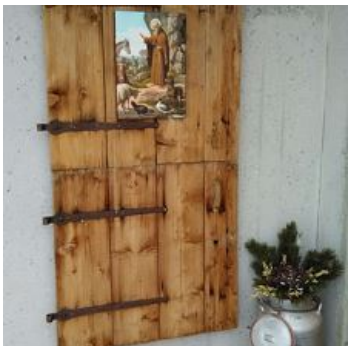
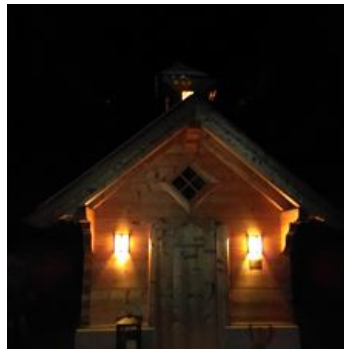
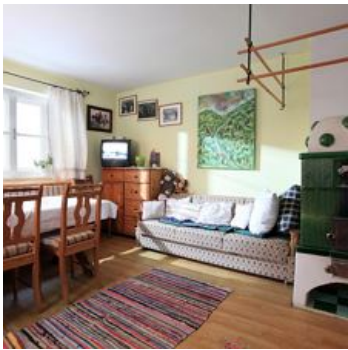


Oberwindau 105 · A-6363 Westendorf · [kathi-poell@gmx.at](mailto:kathi-poell@gmx.at) · +43 5334 2532

# Unting

## farm, farmhouse in Westendorf

Our house, in a quiet, idyllic location, is situated at 950 m of altitude surrounded by the Kitzbüheler Alpen. Westendorf's village centre is approx. 5 km away, while the Choralmbahn gondola station is just 1.5 km from our house. In Winter the Choralmbahn provides your direct access to the SkiWelt Wilder Kaiser - Brixental, with possible connection to the Kitzbühel/Kirchberg ski area. Enjoy the magnificent Windau's Winter paradise with a snow shoe hike or simply a Winter hike! Snow chains would be to your advantage! In Summer our house is the perfect departure point for hikes and mountain-bike tours! Organic products from our farm are available in our family-friendly accommodation!



mountain location · private setting · quiet location · outskirts of town · near the forest · on the hiking path · meadowlands

## Rooms and Apartments

### Current Offers

#### Double room, shared shower/shared toilet

ab  
**€ 27,00**

per person on 19.04.2025

[TO THE OFFER](#)

2-4 Personen · 1 Bedrooms · 16 m<sup>2</sup>

#### 4-bed room, shared shower/shared toilet

2-4 Personen

## Conditions

Children up to 3 years FREE  
Reduction for children on request

## Unting

farm, farmhouse in Westendorf

Oberwindau 105  
A-6363 Westendorf  
Email: [kathi-poell@gmx.at](mailto:kathi-poell@gmx.at)  
Phone: +43 5334 2532

