

Neukumhof

farm, farmhouse in Westendorf

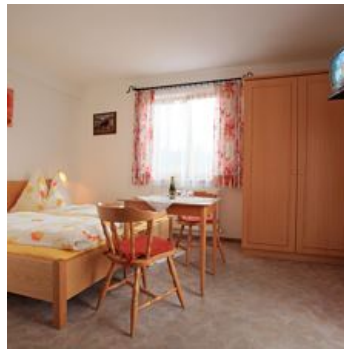


Holzham 85 · A-6363 Westendorf · neukumhof@aon.at · +43 5334 6913
Additional information at <https://www.neukumhof.at/>

Neukumhof

farm, farmhouse in Westendorf

Our farm is situated approx. 800m from Westendorf's village centre, directly beside the cross-country ski trails. The Alpenrosenbahn gondola station providing access to the SkiWelt Wilder Kaiser Brixental, and the outdoor swimming pools are just a 5 minute walk away. Our farm is the perfect departure point for hikes, walks and cycling tours. The ski bus stop is within very close proximity. A tiled stove and cable TV can be found in our lounge. The non-smoking bedrooms are all newly renovated and are equipped with shower/WC, balcony, cable TV, safe and WiFi. All bedrooms are located on the first floor.

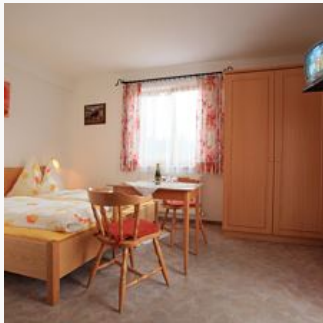


meadowlands · near the forest · quiet location · right at the cross-country ski trail · right on the bike path · outskirts of town · on the hiking path

Rooms and Apartments

Current Offers

Double room, shower, toilet



Approx. 16 - 20m², cable TV, safe, shower/WC, balcony, radio/alarm clock, non-smoking, first floor, newly renovated.

ab
€ 38,00

per person on 26.09.2025

TO THE OFFER

1-2 Personen · 1 Bedrooms · 16 m²

ap./1 bedroom/shower, WC



1 apartment for 2 persons, approx. 40m², bedroom, living room with kitchenette, shower/WC in the hall, TV, radio.

ab
€ 65,00

per apartment on 26.09.2025

TO THE OFFER

2 Personen · 1 Bedrooms · 40 m²

Conditions

Inclusive: bicycle storage Non-smoking rooms, smoking in the breakfast room is not permitted Children in separate room - price on request Apt.: Inclusive: bicycle storage At an extra cost: breakfast, bread delivery service

Neukumhof

farm, farmhouse in Westendorf

Holzham 85

A-6363 Westendorf

Email: neukumhof@aon.at

Phone: +43 5334 6913

<https://www.neukumhof.at/>