

Lodge Pengelstein - Ski & Bike in/out

Ferienhaus in Kirchberg in Tirol



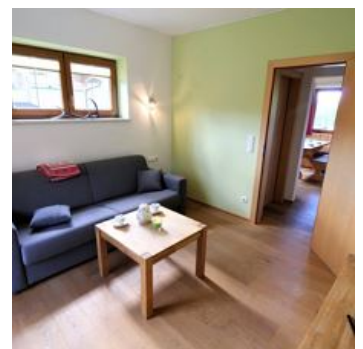
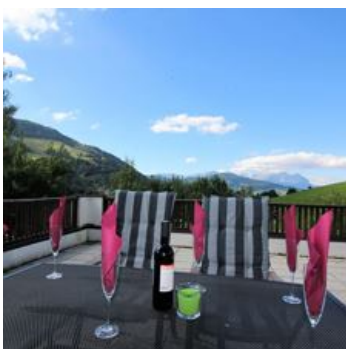
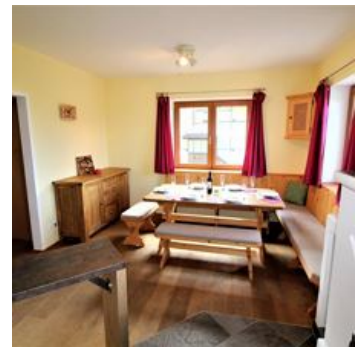
Bahnhofstraße 26 · A-6365 Kirchberg in Tirol · info@apartmentmanagers.at · +43 5357 20216
Additional information at <http://www.apartmentmanagers.at>

Lodge Pengelstein - Ski & Bike in/out

Ferienhaus in Kirchberg in Tirol

Located directly on the Pengelstein ski-piste and just a 1km ski down (2km by car) from the Pengelstein Gondola, this 2 storey house is ideal for those who love their skiing, their peace and quiet - together with some of the most stunning alpine views you'll find anywhere. Summer guests are spoilt as well with some of the finest hiking/mountainbiking routes which begin outside your door.

Various mountain huts are located both above and below Lodge Pengelstein which means you can finish your ski day with a drink, wait until the lifts close and ski back to your door whilst having the piste all to yourself. Summer guests will also benefit from this breath taking location.



mountain location · quiet location

Rooms and Apartments

Current Offers

Apartment, shower and bath tub, 2 bed rooms



1-6 Personen · 2 Bedrooms · 65 m²

This 2 storey house is ideal for those who love their skiing, their peace and quiet - together with some of the most stunning alpine views you'll find anywhere.

ab
€ 130,00

per apartment on 26.09.2025

TO THE OFFER

Conditions

Pre-payment of 30 %, rest amount until 30 days before arrival.

Lodge Pengelstein - Ski & Bike in/out

Ferienhaus in Kirchberg in Tirol

Bahnhofstraße 26

A-6365 Kirchberg in Tirol

Email: info@apartmentmanagers.at

Phone: +43 5357 20216

<http://www.apartmentmanagers.at>



Fraser Burns

Landhaus Hafner: 4-6 Persons (80 m²)

Located directly on the Pengelstein ski-piste and just a 1km ski down (2km by car) from the Pengelstein Gondola, this 2 storey house is ideal for those who love their skiing, their peace and quiet - together with some of the most stunning alpine views you'll find anywhere. Summer guests are spoilt as well with some of the finest hiking/mountain biking routes which begin outside your door.

Various mountain huts are located both above and below Haus Hafner which means you can finish your ski day with a drink, wait until the lifts close and ski back to your door whilst having the piste all to yourself. Summer guests will also benefit from this breath taking location.