

## Haus Janine

holiday apartment in Westendorf



Bichling 164 · A-6363 Westendorf · [haus-janine@tirol.com](mailto:haus-janine@tirol.com) · +43 5334 6666  
Additional information at <http://www.zaussinger.net>



# Haus Janine

## holiday apartment in Westendorf

Our child-friendly house, with 1,000 m<sup>2</sup> garden, is situated an approximate 10-minute walk from Westendorf's village centre. A large garden terrace with 50 m<sup>2</sup> beside the play area, BBQ and table tennis also belong to the house. The free ski bus departs directly from the house taking you to access the SkiWelt Wilder Kaiser Brixental.

1 app. 68 m<sup>2</sup> (wheelchair accessible, own entrance) with cable TV, W-Lan.

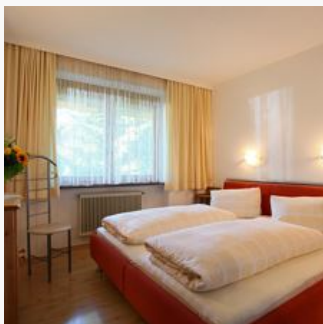


outskirts of town · near the forest · quiet location · private setting · right on the bike path · on the hiking path · right at the cross-country ski trail · meadowlands · right at the ski-bus/ hiking-bus/ bus stop · mountain location

## Rooms and Apartments

### Current Offers

#### apartment/2 bedrooms/shower, WC



74 m<sup>2</sup>, family-disabled friendly apartment, separate entrance, 2 garden terraces, playarea, kitchen with dining area, 1 bedroom with shower, 1 bedroom with handwash basin, nice extra bathroom, 2 WC, I...

2-4 Personen · 2 Bedrooms · 74 m<sup>2</sup>

ab

**€ 140,00**

per apartment on 19.04.2025

**TO THE OFFER**

## Conditions

Inclusive: pets

Exclusive: garage.

On request: price for 2 -3 persons

## Haus Janine

holiday apartment in Westendorf

Bichling 164

A-6363 Westendorf

Email: [haus-janine@tirol.com](mailto:haus-janine@tirol.com)

Phone: +43 5334 6666

<http://www.zaussinger.net>