

Haus am Zieplhang

holiday apartment in Westendorf



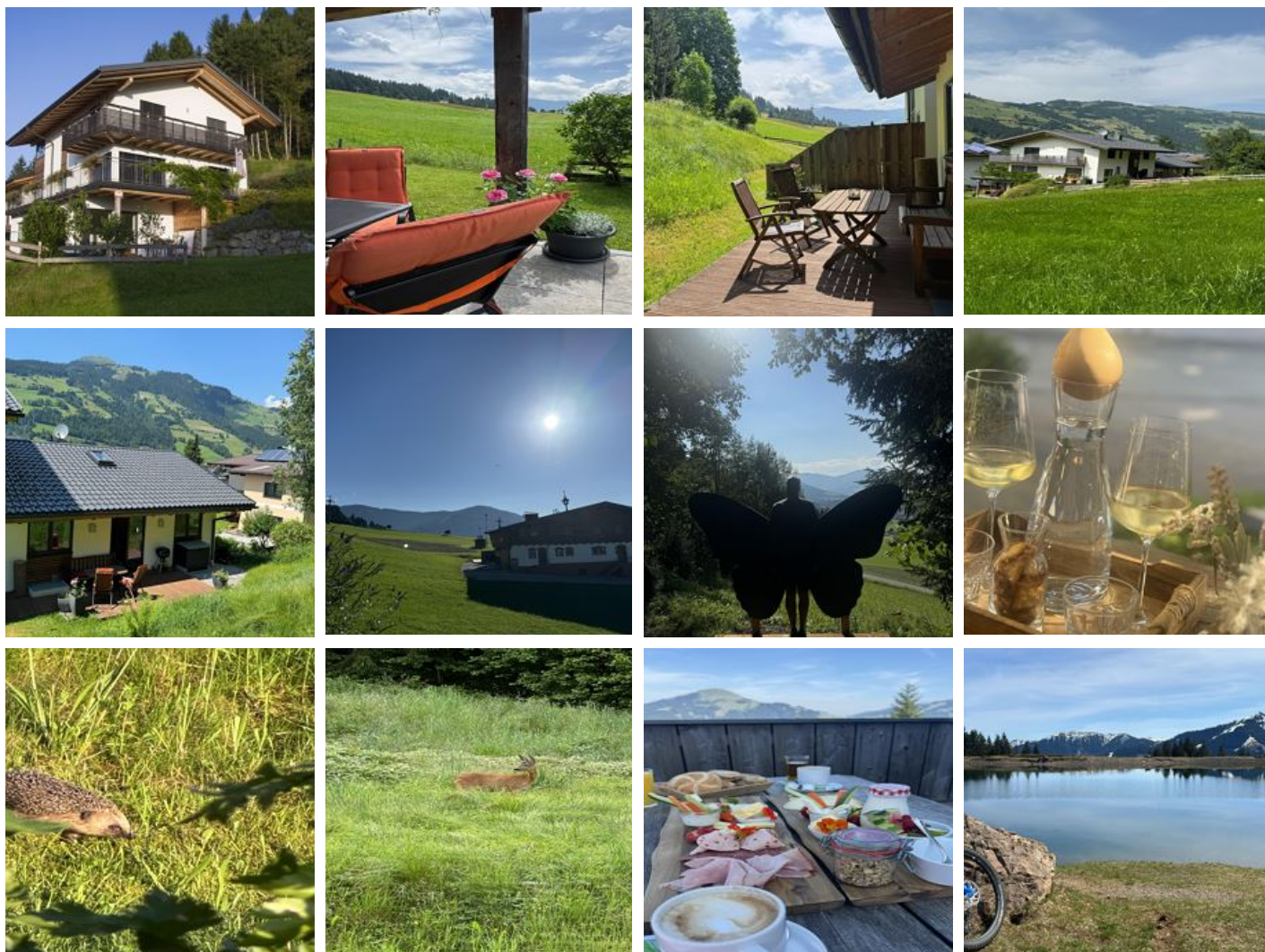
Schulgasse 32 · A-6363 Westendorf · info@westendorfappartement.at · **+49 176 61059353**
Additional information at <https://www.westendorfappartement.at/>

Haus am Zieplhang

holiday apartment in Westendorf

WELCOME!

The family-friendly apartment, situated beside the ski slope and behind Gerry's Inn, provides very easy access to the SkiWelt Wilder Kaiser Brixental! The almost new holiday apartment is furnished with every comfort and lots of attention to detail. Due to the apartment's quiet yet central location, it is perfect for both Winter and Summer holidays. An unforgettable holiday awaits you in the Kitzbüheler Alpen.



outskirts of town · near the forest · right on the slope · quiet location · meadowlands

Rooms and Apartments

Current Offers

Apartment, shower, toilet, 2 bed rooms



1-4 Personen · 2 Bedrooms · 60 m²

Apartment approx. 60m² with 2 bedrooms (1 double bed, 1 bunk bed), kitchen-living room with seating area and TV, 1 bathroom with double sink and shower, 1 separate toilet, and a terrace.

ab
€ 140,00

per apartment on 03.08.2025

TO THE OFFER

Apartment, shower, toilet, 3 bed rooms



1-6 Personen · 3 Bedrooms · 68 m²

Apt. approx. 68 m², 3 bedrooms, kitchen/living room with seating area and TV, bathroom and a terrace.

ab
€ 205,00

per apartment on 03.08.2025

TO THE OFFER

Conditions

In order to make a reservation, we will ask you in an e-mail a few weeks before your trip for a deposit. The remaining amount will be paid in cash upon arrival or alternatively transferred at least 7 days before arrival.

Haus am Zieplhang

holiday apartment in Westendorf

Schulgasse 32

A-6363 Westendorf

Email: info@westendorfappartement.at

Phone: +49 176 61059353

<https://www.westendorfappartement.at/>