

## Haus am Erlensee

holiday apartment in Brixen im Thale



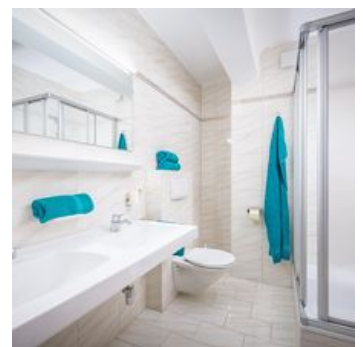
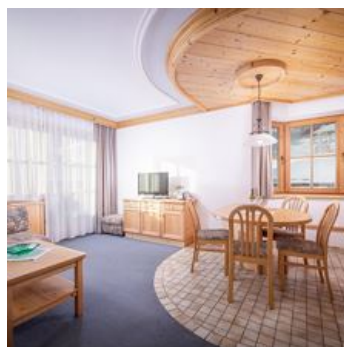
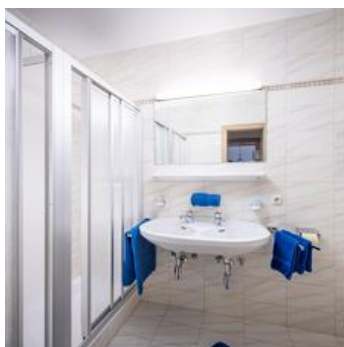
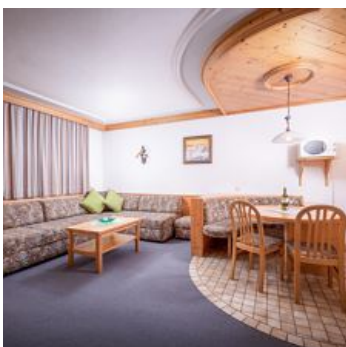
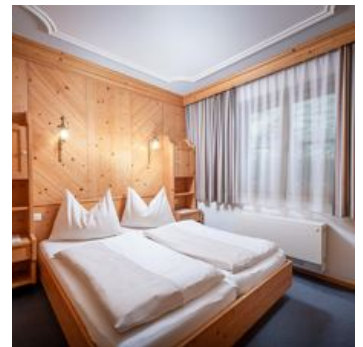
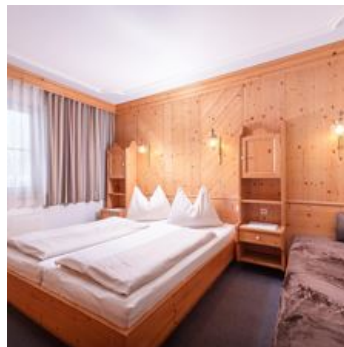
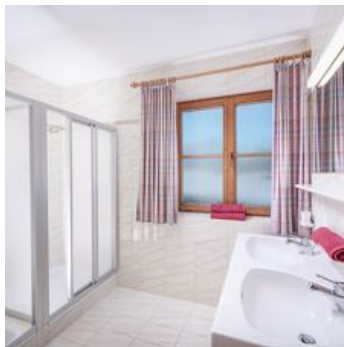
Stöllnweg 3 · A-6364 Brixen im Thale · [info@erlensee.at](mailto:info@erlensee.at) · **+43 677 61285547**  
Additional information at <https://www.erlensee.at>



# Haus am Erlensee

## holiday apartment in Brixen im Thale

Our house, with comfortably furnished holiday apartments, is situated on an angler's paradise - the Erlensee Lake in Brixen im Thale with the restaurant "Zum Fischerstadl" just alongside. Approx. 300m away from Brixen's gondola station which takes you directly into the SkiWelt Wilder Kaiser - Brixental in winter. The ski slope from Westendorf runs directly past our house. In summer, the gondola takes you to the hiking region in the middle of the Kitzbühel Alps in comfort. Within very close proximity Brixen im Thale's village centre, the cross-country ski tracks, the bathing lake and the children's playground are all to be found. Our residents may angle at the Erlensee Lake, free-of-charge, in summer. Additionally we have a sauna, laundering facilities, ski room, and a covered car park. WiFi free.

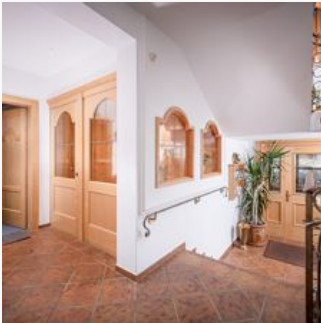


quiet location · central location · right at the cross-country ski trail · right on the bike path · near the forest · right on the slope · on the hiking path · meadowlands · sauna

## Rooms and Apartments

### Current Offers

#### apartment/1 bedroom/shower, WC



1-5 Personen · 1 Bedrooms · 58 m<sup>2</sup>

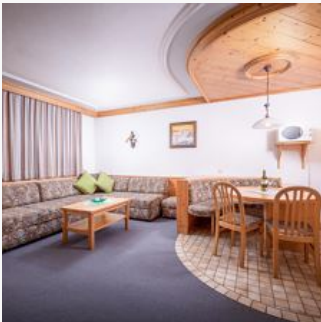
Very nice, bright holiday apartment for 2 - 5 persons, close to the village centre, the lift and the cross-country ski tracks. 1 bedroom, living/sleeping area, bathroom with 2 showers, WC, double was...

ab  
**€ 137,00**

per apartment on 19.04.2025

**TO THE OFFER**

#### Apartment, shower, toilet, 1 bed room



1-4 Personen · 1 Bedrooms · 40 m<sup>2</sup>

Very nice, bright holiday apartment close to the village centre and lift. Apartment for 2 - 4 persons, one bedroom, bathroom with shower, WC and double wash-hand basins, living/sleeping area, kitchen...

ab  
**€ 122,00**

per apartment on 19.04.2025

**TO THE OFFER**

### Apartment, bath, toilet, 1 bed room



2-4 Personen · 1 Bedrooms · 53 m<sup>2</sup>

ab  
**€ 127,00**

per apartment on 19.04.2025

**TO THE OFFER**

## Conditions

included: heating, (covered) carpark, balcony, electricity, bed linen, towels, tableware and glasses - more than enough available.

Excluded: sauna, washing machine, tumble dryer Pets allowed

## Haus am Erlensee

holiday apartment in Brixen im Thale

Stöllnweg 3

A-6364 Brixen im Thale

Email: [info@erlensee.at](mailto:info@erlensee.at)

Phone: +43 677 61285547

<https://www.erlensee.at>