

Appartement Westendorf

holiday apartment in Westendorf



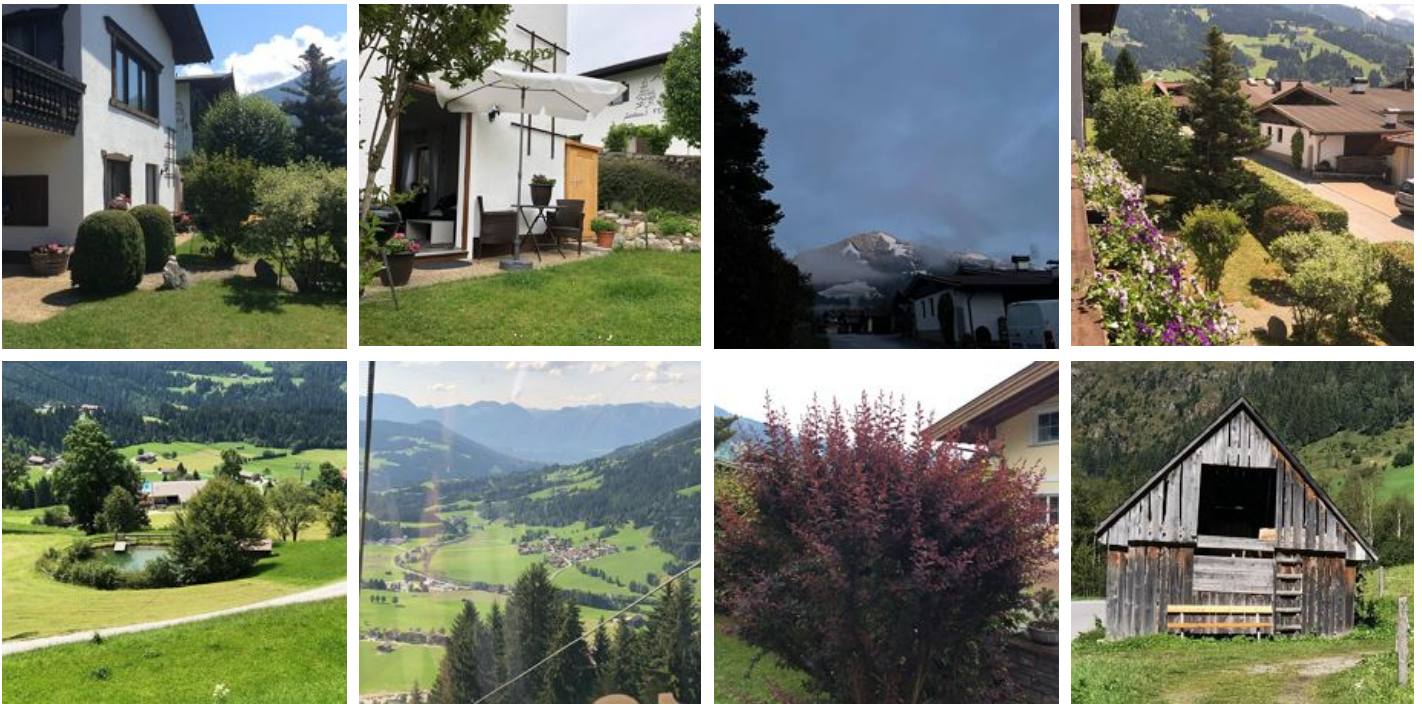
Feichten 23 · A-6363 Westendorf · alexander.birmili@t-online.de · +49 1708003111
Additional information at <https://www.kitzbueheler-alpen.com/de/bri/brixental.html>

Appartement Westendorf

holiday apartment in Westendorf

Appartement Westendorf is a beautiful ground floor apartment with an area of garden on a south-facing slope in the rural part of Westendorf. It is only a few minutes by car to the village centre and to the Alpenrosenbahn's valley station. Westendorf is located in the Tyrolean Brixental valley between Wörgl on the A12 and Kitzbühel. The Skiwelt Wilder Kaiser ski area and the Kitzbühel Alps with their sheer endless pistes and countless lifts are an Eldorado for skiers in Winter.

In Summer, on the other hand, they are a true holiday paradise for nature and hiking enthusiasts. Westendorf combines the beauty of the Tyrolean Alps with the proximity to glamorous Kitzbühel. In a short drive you can also reach the much-praised town of Kufstein, "the pearl of Tyrol" or the Kaiser mountain range with its legendary "Wilden Kaiser" as well as Innsbruck with its "Golden Roof".



mountain location · quiet location · on the hiking path · outskirts of town · near the forest

Rooms and Apartments

Current Offers

Apartment, shower, toilet, 2 bed rooms



1-5 Personen · 2 Bedrooms · 80 m²

The holiday apartment on the ground floor and with private entrance is 80m² and spaciouly planned. It has a large, south-facing living room with access to the garden, two bedrooms, as well as, a full...

ab
€ 255,00

per apartment on 26.09.2025

TO THE OFFER

Conditions

Sie verbringen eine schöne Zeit und haben die Ferienwohnung für sich alleine. Wir sind für Sie erreichbar bei Fragen oder Wünschen.

Appartement Westendorf

holiday apartment in Westendorf

Feichten 23

A-6363 Westendorf

Email: alexander.birmili@t-online.de

Phone: +49 1708003111

<https://www.kitzbueheler-alpen.com/de/bri/brixental.html>