

Appartement Jochblick

holiday apartment in Brixen im Thale



Brixenbach 35 · A-6364 Brixen im Thale · jackypirch@gmx.net · **+43 664 1149603**

Appartement Jochblick

holiday apartment in Brixen im Thale

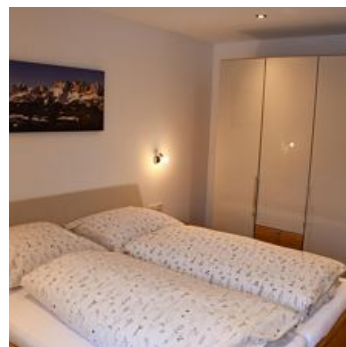
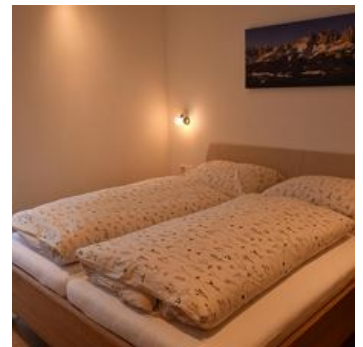
In our new building there is a 60m² apartment with its own entrance, two bedrooms, each with its own bathroom and an inviting kitchen-living room.

There is also a large terrace with a view of the beautiful Tyrolean mountains and the neighboring fields. The apartment is in a quiet yet central location on the Brixenbach.

In winter there is a ski bus stop directly opposite the house, in summer it is the perfect starting point for hikes or bike tours in the Kitzbühel Alps.

You can store your skis in winter and your bikes in summer in the 15m² lockable cellar.

We look forward to welcoming you to our house.



quiet location · meadowlands · near the forest · right on the bike path · on the hiking path · outskirts of town · right at the ski-bus/
hiking-bus/ bus stop

Rooms and Apartments

Current Offers

Apartment, shower, toilet, 2 bed rooms



1-4 Personen · 2 Bedrooms · 60 m²

Our 60m² flat has its own entrance, an inviting kitchen-living room, 2 bedrooms, each with its own bathroom and a 15m² cellar room for skis and bikes. The flat has a large terrace with a view of th...

ab
€ 180,00

per apartment on 03.08.2025

TO THE OFFER

Conditions

incl. ski room, towels

excl. local tax

Appartement Jochblick

holiday apartment in Brixen im Thale

Brixenbach 35

A-6364 Brixen im Thale

Email: jackypirch@gmx.net

Phone: +43 664 1149603