

Appartement Glonersbühelhof

farm, farmhouse in Westendorf

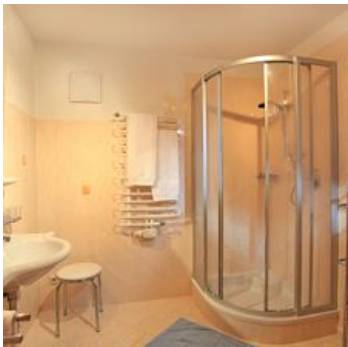


Bergliftstraße 76 · A-6363 Westendorf · **gloner.jo@gmail.com** · **+43 664 5102271**

Appartement Glonersbühelhof

farm, farmhouse in Westendorf

Our house, with magnificent panoramic views of the Brixen valley's mountainsides, was renovated on the exterior in Autumn 2014. In just a few minutes on foot, Westendorf's village centre and the Alpenrosenbahn gondola station, which provides access to the SkiWelt Wilder Kaiser Brixental and also connecting to the Kitzbühel / Kirchberg ski area, can be easily reached. All other activities, such as hiking and cycling, can begin directly from the house. In the garden and available for your use is a trampoline, table-tennis etc...



near the forest · quiet location · private setting · meadowlands · right on the golf course · on the hiking path · outskirts of town · infrared cabin

Rooms and Apartments

Current Offers

ap./2 bedr. 1 living-bedr./shower, WC



1-8 Personen · 2 Bedrooms · 88 m²

Apartment with approx. 88m² for 4 – 8 persons furnished in country-house style. The apartment has a separate entrance with a large balcony (beautiful views of the Tyrolean mountainside) and an infra-r...

ab
€ 80,00

per apartment on 26.09.2025

TO THE OFFER

Conditions

Occupation by 2 or 3 persons – price available on request

Appartement Glonersbühelhof

farm, farmhouse in Westendorf

Bergliftstraße 76
A-6363 Westendorf
Email: gloner.jo@gmail.com
Phone: +43 664 5102271