

# Apartment Anita "Hohe Salve"

holiday apartment in Westendorf



Schulgasse 4 · A-6363 Westendorf · [info@anita-westendorf.at](mailto:info@anita-westendorf.at) · +43 5334 6127  
Additional information at <https://www.anita-westendorf.at/de/>



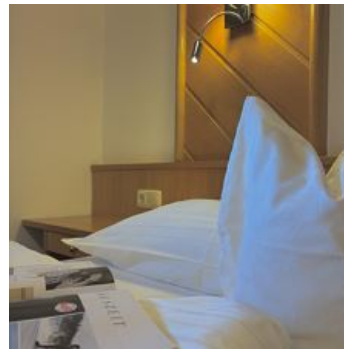
# Apartment Anita "Hohe Salve"

## holiday apartment in Westendorf

Apartment "Anita" is located in the centre of Westendorf!

In summer, the apartment's garden with cafe, trampoline, table tennis, kids playground and a nice sun terrace.

In winter, our "Apartment Anita" is situated directly on the beginners ski slope of Westendorf, from where you can access the SkiWelt Wilder Kaiser Brixental. Both, ski hire facilities and a sports shop are located at the ground-floor of our house- All infrastructure facilities are either close-by or within easy reach.



right on the bike path · central location · right on the slope · meadowlands · on the hiking path

## Rooms and Apartments

### Current Offers

#### apartment 1, living room, 2 bedrooms



2-7 Personen · 2 Bedrooms · 75 m<sup>2</sup>

- 75 m<sup>2</sup> for 4-7 persons - 2 bedrooms - 2 bathrooms with shower -  
living room & kitchen with dining area and sofa bed - 2 Flat-TV, radio,  
safe - free WiFi - large balcony

ab  
**€ 339,00**

per apartment on 10.01.2026

**TO THE OFFER**

## Conditions

Includes: bed linen and towels, parking facilities

## Apartment Anita "Hohe Salve"

holiday apartment in Westendorf

Schulgasse 4

A-6363 Westendorf

Email: [info@anita-westendorf.at](mailto:info@anita-westendorf.at)

Phone: +43 5334 6127

<https://www.anita-westendorf.at/de/>

## **Hermine Baumgartner**

Wir freuen uns, Sie schon bald bei uns begrüßen zu dürfen

Ihre Gastgeber Hermine und Hans Baumgartner