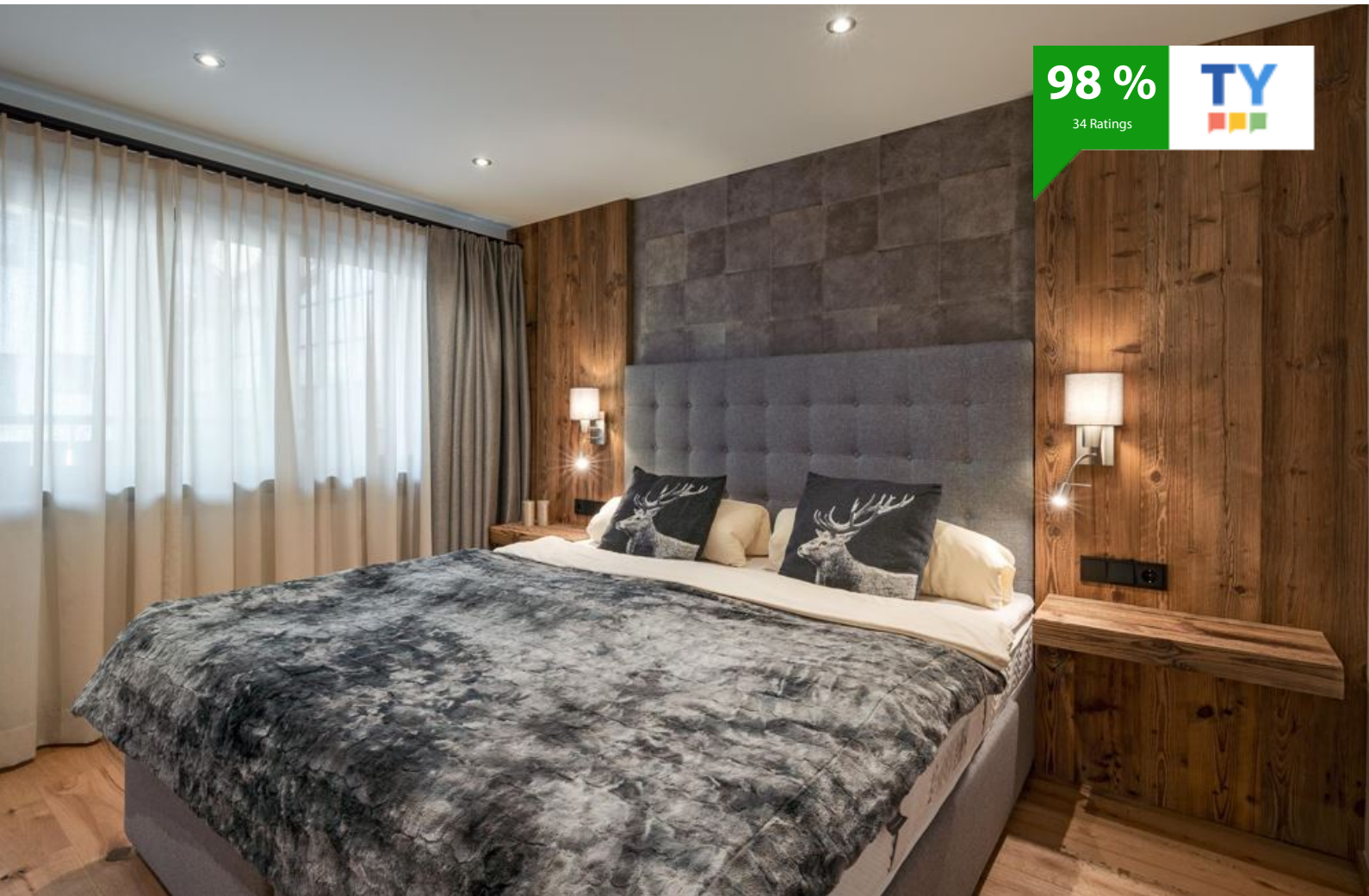


## Alpine Lodge

farm, farmhouse in Kirchberg in Tirol



Bahnhofstraße 26 · A-6365 Kirchberg in Tirol · [info@apartmentmanagers.at](mailto:info@apartmentmanagers.at) · +43 660 6544740  
Additional information at [http://: www.apartmentmanagers.at](http://www.apartmentmanagers.at)

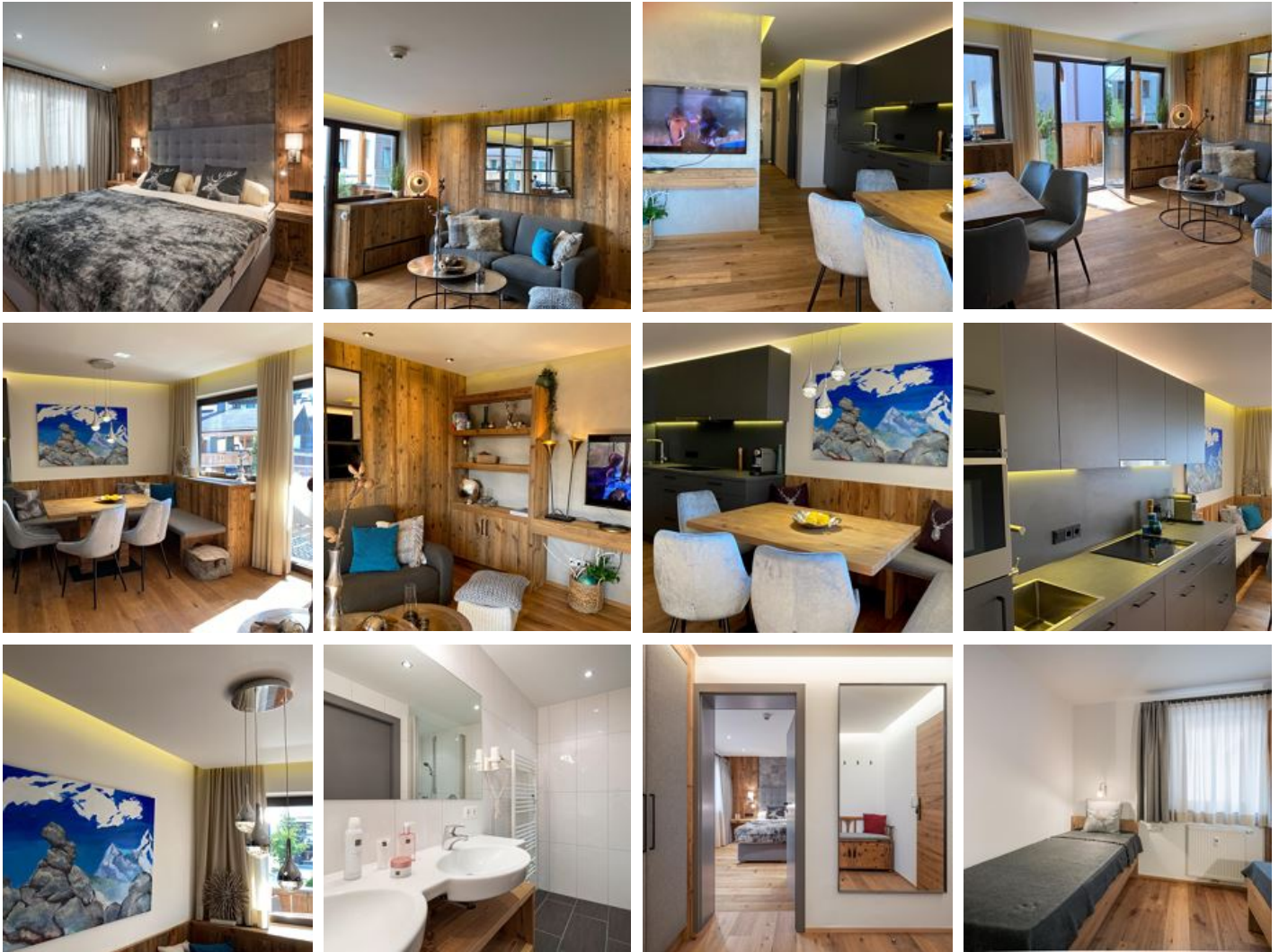
## Alpine Lodge

### farm, farmhouse in Kirchberg in Tirol

As the saying goes 'location is everything' and you can't get more centrally located in Kirchberg than Alpine Lodge. Positioned on the 1st floor and the backside of the building Alpine Lodge offers peace and quiet and superb views.

The Fleckalm and Maierlbahn Gondolas are just a few minutes by car or bus (bus-stop 30m from your door). Stroll downstairs to the famous Cafe Lorenzoni for breakfast or to pick up fresh bread. Alpine Lodge is also well placed for summer guests with various hiking/biking beginning on your doorstep. The Badesee Kirchberg (man made swimming lake) is just a 10min walk with Kitzbühel's Schwarzsee (black lake) and the Schwarzsee Golf Course located just 3km away.

Whether it's a winter or summer visit you're planning Alpine Lodge is a superb option.



central location

## Rooms and Apartments

### Current Offers

#### Apartment, shower, toilet, 2 bed rooms



1-5 Personen · 2 Bedrooms · 65 m<sup>2</sup>

As the saying goes 'location is everything' and you can't get more centrally located in Kirchberg than Alpine Lodge. Positioned on the 1st floor and the backside of the building Alpine Lodge offers pe...

ab  
**€ 95,00**

per apartment on 19.04.2025

**TO THE OFFER**

## Conditions

Pre-payment of 30 %, rest amount until 30 days before arrival.

## Alpine Lodge

farm, farmhouse in Kirchberg in Tirol

Bahnhofstraße 26

A-6365 Kirchberg in Tirol

Email: [info@apartmentmanagers.at](mailto:info@apartmentmanagers.at)

Phone: +43 660 6544740

[http://: www.apartmentmanagers.at](http://www.apartmentmanagers.at)



## Fraser Burns

My name is Fraser Burns and I am the founder of Apartment Managers - established in 2003. Long before Apartment Managers I worked as a professional ski instructor travelling the world teaching two Winter seasons per year – for many years. I have taught skiing in Australia, Japan, Canada and Austria. Having skied in some of the best resorts in the world it was Kitzbühel that really had a huge impact on me. Resulting in me immigrating from Sydney (my home) to Kitzbühel/Austria in 2002.